



UTL USF / UWF COUPLINGS (Spider / Snap Wrap / T Cushions Elastomer)

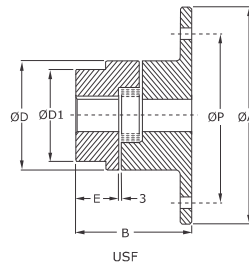
UTL FLEXIBLE COUPLINGS



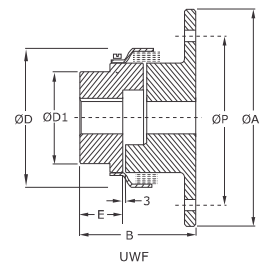
USF



UWF



USF



UWF

FEATURES

- Specially designed for engine applications.
- Easy to assemble & disassemble.
- Elimination of extension shaft reduces cost of equipment.
- Coupling mounted directly on engine flywheel.
- For USF spider is used as an element (size 150 to 2955)
- For UWF snap wrap is used as an element (size 150 to 225) & T cushions are used as elements (size 226 to 2955)
- Maximum permissible misalignment: angular 1°, parallel 0.4 mm & axial 3 mm (initial alignment must be 25 % of maximum)

DIMENSIONS & TECHNICAL DATA

Size	Rated Torque Nm	kW Rating at 100 rpm	Max. Speed rpm	SAE size Inches	Flange dimensions in mm				Hub dimensions in mm						Wt in. Kg USF	Wt in. Kg UWF	Moment of inertial kg.m ²
					ØA	ØP	No. of holes	Hole Dia	ØD UWF / USF	ØD1	E	Min. Bore	Max. Bore	B			
150	141	1.49	3400	5.5	190.0	137.0	3	12	111 / 96	80	45	15	48	122	On request UTL will provide data.	On request UTL will provide data.	On request UTL will provide data.
190	190	2.01	1900	11.5	352.4	333.4	8	10.3	130 / 115	102	54	20	60	107			
225	265	2.76	1900	11.5	352.4	333.4	8	10.3	142 / 127	111	64	20	65	117			
226	324	3.43	3000	6.5	216.0	200.0	6	8.5	153 / 137	115	70	22	70	136			
			2700	8.0	263.5	244.5	6	10.3									
			2100	10.0	314.3	295.3	8	10.3									
			1900	11.5	352.4	333.4	8	10.3									
			1500	14.0	466.7	438.3	8	13.5									
276	532	5.60	2700	8.0	263.5	244.5	6	10.3	173 / 157	127	80	22	75	148			
			1900	11.5	352.4	333.4	8	10.3									
			1500	14.0	466.7	438.2	8	13.5									
280	782	8.20	2100	10.0	314.3	295.3	8	10.3	205 / 192	140	80	30	80	148			
			1900	11.5	352.4	333.4	8	10.3									
			1500	14.0	466.7	438.2	8	13.5									
295	1279	13.40	1900	11.5	352.4	333.4	8	10.3	251 / 237	160	95	40	95	171			
			1500	14.0	466.7	438.2	8	13.5									
2955	2132	22.40	1900	11.5	352.4	333.4	8	10.3	251 / 237	180	108	50	115	184			
			1500	14.0	466.7	438.2	8	13.5									

MATERIAL SPECIFICATIONS

Hub	Size - 150-225	Cast Iron	CI	DIN 1693 GG 20
Hub	Size - 226-2955	Cast Iron	CI	DIN 1693 GG 25
Flange	Size - 150-225	Cast Iron	CI	DIN 1693 GG 20
Flange	Size - 226-2955	Cast Iron	CI	DIN 1693 GG 25
Spider 80° Shore A	All Size	Synthetic Rubber	NBR	ASTM D2000 BG 810
Outer ring	Size - 150-2955	Mild. Steel	CRCA	BS 970



USF



UWF



• Alternative Spider / Snap wrap / T Cushion for higher power ratings is available on request.

Snap wrap 92° Shore A	All Size	Synthetic Rubber	NBR	ASTM D2000 BG 910	Torque 1.6 times of standard
Snap wrap 80° Shore A	All Size	Synthetic Rubber	EPDM	ASTM D2000 AA 810	Torque as per standard
Snap wrap 92° Shore A (Yellow Colour)	All Size	Polyurethane	PU		Torque 1.8 times of standard
Snap wrap 98° Shore A (Red Colour)	All Size	Polyurethane	PU		Torque 2.5 times of standard
T Cushion 80° Shore A	All Size	Synthetic Rubber	NBR	ASTM D2000 BG 810	Torque as per standard
T Cushion 92° Shore A	All Size	Synthetic Rubber	NBR	ASTM D2000 BG 910	Torque 1.6 times of standard
T Cushion 80° Shore A	All Size	Synthetic Rubber	EPDM	ASTM D2000 AA 810	Torque as per standard
T Cushion 92° Shore A (Yellow Colour)	All Size	Polyurethane	PU		Torque 1.8 times of standard
T Cushion 98° Shore A (Red Colour)	All Size	Polyurethane	PU		Torque 2.5 times of standard
Spider 92° Shore A	All Size	Synthetic Rubber	NBR	ASTM D2000 BG 910	Torque 1.6 times of standard
Spider 80° Shore A	All Size	Synthetic Rubber	EPDM	ASTM D2000 AA 810	Torque as per standard
Spider 92° Shore A (Yellow Colour)	All Size	Polyurethane	PU		Torque 1.8 times of standard
Spider 98° Shore A (Red Colour)	All Size	Polyurethane	PU		Torque 2.5 times of standard

• For temperature range of elastomers please see on page no. 37 - coupling selection



Riddhi Engineering Company

www.couplings-mounts.com

sales@riddhiengineeringco.com

+91 74900 32784