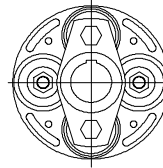
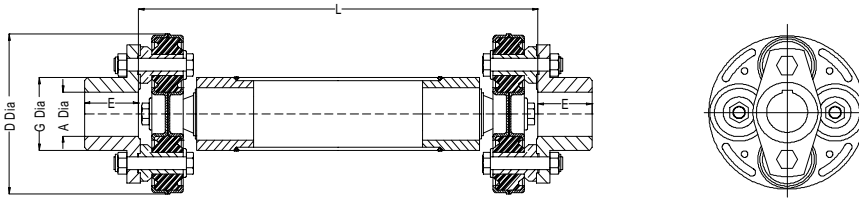


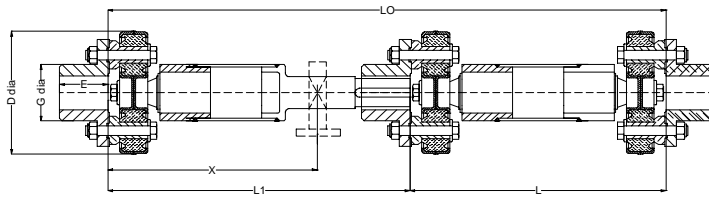
## Unique SBB Flexible Drive Shafts Specially Suitable for Cooling Tower Fan Drives



**Large Misalignment  
Capacity  
Dampen & absorb  
Vibrations**

**Type 1  
Single Span**

(Style 2/4 shown)



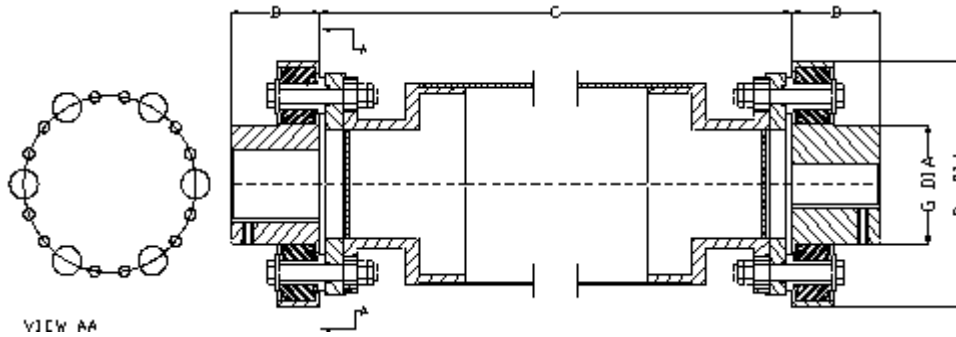
**Type 2  
Twin or  
Multiple  
Span**

Size	Nominal HP/100 RPM	Nominal Torque Nm	Max Torque Nm	Max bore A mm	D mm	G mm	E mm
60-2/4	3.6	260	392	48	153	70	49
70-2/4	6.9	490	735	57	178	81	59
80-2/4	10	720	1080	65	203	95	68
90-2/4	13.9	990	1490	70	229	105	84
100-2/4	17.7	1260	1900	80	254	116	97
120-2/4	30.5	2170	3250	90	305	133	111
90-3/6	29.2	2080	3120	100	286	150	110
100-3/6	34.1	2430	3650	100	296	160	120
120-3/6	54.5	3885	5830	120	353	177	140

Size	Type FF		Type SF		Bolt Torque	Max misalignment/coupling		
	Weight	MR <sup>2</sup>	Weight	MR <sup>2</sup>		Axial	Angular cont degree	Angular mom degree
60-2/4	Kg	Kg.m <sup>2</sup>	Kg	Kg.m <sup>2</sup>	Nm	mm	3.5	8
70-2/4	10	0.016	7	0.009	80	2.4	3.5	8
80-2/4	16	0.036	11	0.02	80	2.4	3.5	8
90-2/4	22.6	0.07	15	0.04	120	3.2	3.5	8
90-2/4	33.4	0.11	23	0.06	200	3.2	3.5	8
100-2/4	47	0.18	30	0.09	400	4	3.5	8
120-2/4	68	0.42	42	0.22	700	3.2	2.5	5
90-3/6	72	0.8	45	0.41	200	3.2	2.5	5
100-3/6	80	0.8	50	0.41	400	3.2	2.5	5
120-3/6	124	1.5	77	0.78	700	3.2	2.5	5

Notes - Mass and inertia figures are excluding tube. Maximum length and tube diameter depend on load and operating speeds. Shafts are available in mild steel or Stainless steel construction. MS shafts are Hot dip galvanised on request.

**Unique Transmission (India) Pvt Ltd**



( For sizes SB 2706 / SB 3006 )

### Unique SB Drive Shaft - Single Span - for Cooling Tower

With over size Tube - requires no mid support Bearing  
Easy removal of spacer without shifting Motor / Gearbox

Size	HP/100 RPM	Max Motor HP ( SF = 2)	D Dia	G Dia	Max Bore mm	B mm	Tube OD mm	C Max mm
SB1906-A	10	75	190	92	65	70	114	2850
SB1906-B	10	75	190	92	65	70	140	3250
SB1906-C	10	75	190	92	65	70	165	3600
SB 2206-A	14	105	220	106	75	80	140	3250
SB 2206-B	14	105	220	106	75	80	165	3600
SB 2206-C	14	105	220	106	75	80	219	4000
SB 2706-A	28	210	270	116	80	100	140	3250
SB 2706-B	28	210	270	116	80	100	165	3600
SB 2706-C	28	210	270	130	90	100	219	4100
SB 2706-D	28	210	270	130	90	100	273	4500
SB 3006-A	45	338	300	140	100	110	140	3200
SB 3006-B	45	338	300	140	100	110	165	3600
SB 3006-B	45	338	300	140	100	110	219	4100
SB 3006-C	45	338	300	140	100	110	273	4500

C Max given for 1500 RPM applications. Longer lengths possible at reduced speeds.

Max Misalignment 1 Degree per coupling

Max offset parallel 60 mm for length of 3200 mm. Longer lengths can accommodate larger offsets.

Dynamic Balancing to Gr 16 ISO 1940 - Assembly trim balanced at operating speed

Vibration limited to 0.050 mm Pk to Pk at whirl test bed at operating speed at no load.

Available in SS construction - alternatively HDG construction

## Unique Transmission (India) Pvt Ltd