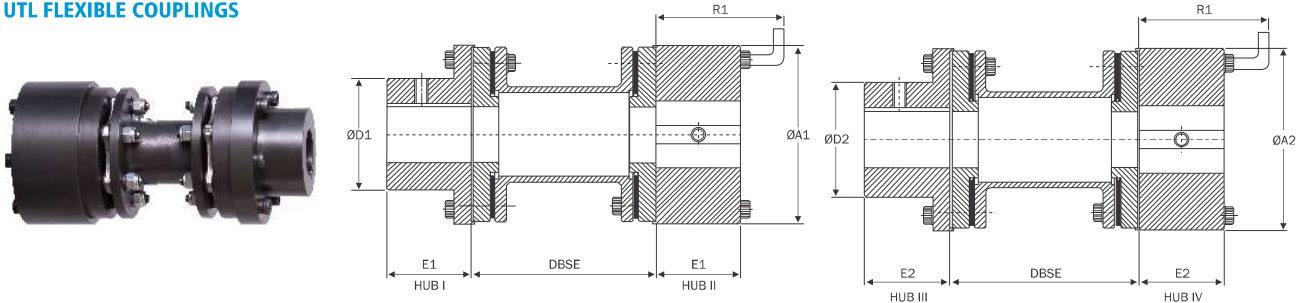




UTL FLEXIBLE COUPLINGS



FEATURES

- Power to weight ratio high
- Accommodates angular and axial misalignments
- High temperature application
- Visual inspection is possible without dismantling equipments
- Low axial stiffness with high torsional rigidity
- High-speed capacity
- Range up to 13367 Nm
- Added advantage of stretch fitted shim pack
- **API 671 compliance available on request**
- **API 610 compliance available on request**

DIMENSIONS & TECHNICAL DATA

Dimensions are in mm

Size	Rated Torque Nm	kW at 100 rpm	Max. Speed rpm	Dimensions														Weight in kg Approx		Moment of Inertia kgm ² Approx		Tors. Stiffness radial Approx
				Min. Bore	Hub I	Hub II	Hub III	Hub IV	Min. DBSE	Std. DBSE	E1	E2	ØA1	ØA2	ØD1	ØD2	R1	Min. Std. "DBSE"	Per Mtr Extra "DBSE"	Min. Std. "DBSE"	Per Mtr Extra "DBSE"	
4	33	0.35	7500	8	19	32	24	42	55		25	30	61	69	32	40	70	1.30	1.20	0.001	0.0001	0.016
8	64	0.67	7500	10	22	25	38	48	65	100	30	40	69	86	40	55	80	1.20	1.30	0.001	0.0002	0.030
25	160	1.67	7000	12	30	38	48	72	70	140	40	45	90	108	55	70	90	3.76	2.41	0.0038	0.0005	0.025
65	515	5.4	6000	17	40	50	65	92	80	180	45	55	108	135	70	86	105	6.00	2.70	0.009	0.0009	0.040
125	860	9	5200	17	52	70	80	104	90		55	60	135	155	86	108	120	11.10	7.00	0.030	0.0005	0.095
165	1337	14	4800	22	65	80	90	120	120		60	70	152	179	108	130	125	17.00	8.40	0.060	0.0088	0.170
370	2388	25	4400	37	80	100	108	142	130	140	70	90	182	200	130	158	135	28.40	13.10	0.130	0.0213	0.300
390	3342	35	4200	32	90	115	127	155	130	180	90	95	197	222	158	181	155	38.30	12.82	0.234	0.0360	0.430
790	5060	53	4000	42	105	130	140	178	135	250	95	105	225	250	181	206	160	53.18	19.21	0.418	0.0530	0.600
1025	7161	75	3800	47	115	140	155	192	140		105	115	250	275	206	223	170	74.40	27.10	0.700	0.0670	0.800
1425	10025	105	3700	52	120	155	170	212	150	180	115	130	175	300	223	248	190	98.63	34.60	1.134	0.1400	1.100
1880	13367	140	3600	62	135	165	190	255	175	250	130	145	300	375	248	280	215	128.10	42.80	1.700	0.1600	1.500

• For non standard DBSE please contact UTL

MATERIAL SPECIFICATIONS

Hub	Size - 4 - 1880	Steel C 40	St	EN/DIN 10263 - 2
Spacer	Size - 4 - 1880	Steel C 40	St	EN/DIN 10263 - 2
Disc Pack	Size - 4 - 1880	Stainless Steel	SS	



• For temperature range of elastomers please see on page no. 37 - coupling selection



www.couplings-mounts.com
 sales@riddhiengineeringco.com
 +91 74900 32784