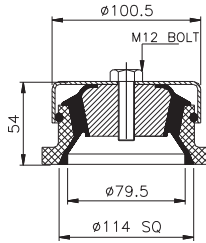
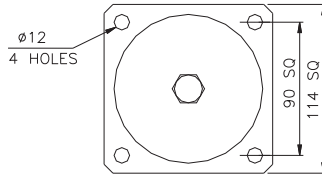




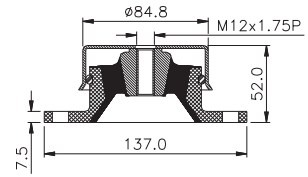
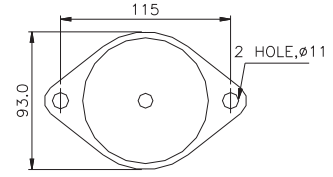
DOMES MOUNTS



Moulding Innovation into Global Bonds



PTE / PTC



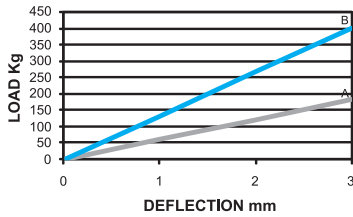
PSB - 84

PART NO.	LOAD (Kg)	DEFLECTION (mm)	COLOUR CODE
PTE	185	3.0	GREEN
PTC	400	3.0	RED

PART NO.	TYPE	LOAD (Kg)	DEFLECTION (mm)	COLOUR CODE
PSB - 84	A	80	4.0	BLUE
PSB - 84	B	130	4.0	WHITE
PSB - 84	C	175	3.0	GREEN

These are compact Shock mounts, designed to work in most severe conditions. The top cup and "O" ring protect the elastometer from surrounding environment. The aluminium base casting is sturdy and light weight. The mount ensures single degree working of the installed equipment.

PTE & PTC



PSB-84

