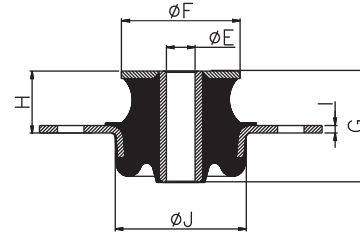
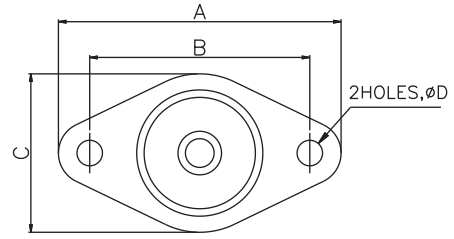
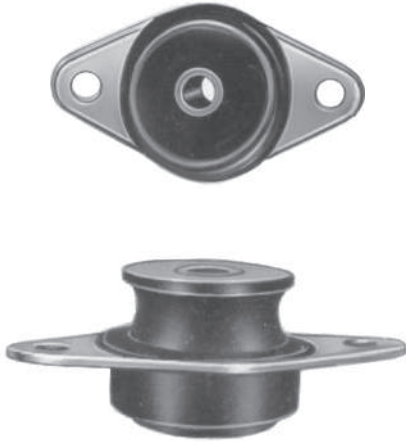




CORE MOUNTS



Moulding Innovation into Global Bonds



PART NO	DIMENSIONS (mm)									
	A	B	C	ØD	ØE	ØF	G	H	I	ØJ
PSC - 1	114	89	64	10.3	11.6	48	45	25	3	53
PSC - 2	133.3	108	82.5	10.3	17.5	70	57	30	3	57

PART NO.		LOAD (Kg)	DEFLECTION (mm)
PSC - 1	A	91	4.6
PSC - 1	B	114	4.6
PSC - 1	C	159	4.8
PSC - 1	D	182	4.6
PSC - 1	E	227	4.8
PSC - 2	A	364	5.1
PSC - 2	B	364	4.6
PSC - 2	C	455	4.6
PSC - 2	D	545	4.6
PSC - 2	E	636	4.6

POLYBOND Core mounts are designed so that the rubber works in both, shear, and compression. These mounts will work in most severe shock conditions when used with snubbing washers. The low profile, failsafe core mounts are used for a number of applications.

