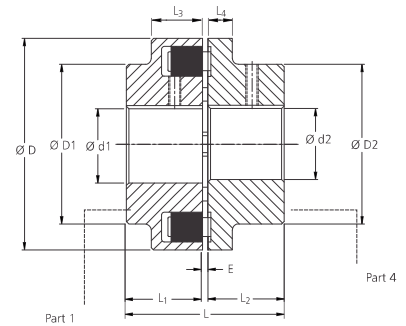
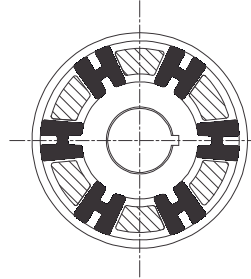




Riddhi Engineering Company

UTL UN TYPE B COUPLINGS

UTL FLEXIBLE COUPLINGS



FEATURES

- Coupling made of cast iron GG 25
- Torsionally flexible, maintenance free, vibration-damping
- Axial plug-in, fail-safe
- Finish bore according to ISO fit, feather keyway according to DIN 6885 sheet 1 - JS9 and P9

DIMENSIONS & TECHNICAL DATA

Size B	Rated Torque Nm	Max. Torque Nm	Max. Speed rpm	Pilot Bore mm	Max. Bore		Dimensions are in mm									Wt in. Kg approx.	Moment of inertial (kg.m ²)
					Ød1mm	Ød2mm	ØD	ØD1	ØD2	L	L ₁	L ₂	L ₃	L ₄	E		
58	19	57	5000	-	19	24	58	-	40	42	20	20	20	8	2-4	0.527	0.0003
68	34	102	5000	-	24	28	68	-	50	42	20	20	20	8	2-4	0.739	0.0005
80	60	180	5000	-	30	38	80	-	68	62	30	30	30	10	2-4	1.786	0.0028
95	100	300	5000	-	42	42	95	76	76	72	35	35	30	12	2-4	2.759	0.0057
110	160	480	5000	-	48	48	110	86	86	82	40	40	34	14	2-4	4.133	0.0112
125	240	720	5000	-	55	55	125	100	100	102	50	50	36	18	2-4	6.664	0.0274
140	360	1080	4900	-	60	60	140	100	100	112	55	55	34	20	2-4	8.253	0.0402
160	560	1680	4250	-	65	65	160	108	108	122	60	60	40	20	2-6	11.041	0.0633
180	880	2640	3800	-	75	75	180	125	125	142	70	70	42	20	2-6	16.447	0.125
200	1340	4020	3400	-	85	85	200	140	140	162	80	80	47	24	2-6	23.724	0.234
225	2000	6000	3000	-	90	90	225	150	150	182	90	90	52	18	2-6	30.626	0.37
250	2800	8400	2750	44	100	100	250	165	165	203	100	100	60	18	3-8	39.455	0.588

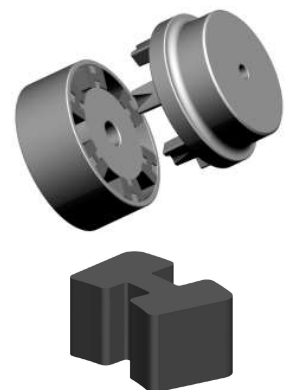
* Permissible temperature range of ambient air and machine shaft ends between -30°C and +80°C

MATERIAL SPECIFICATIONS

Hub	Size -58 - 250	Cast Iron	CI	DIN 1693 GG 25
H cushion 80° shore A	Size -58 - 250	Nitrile Rubber	NBR	ASTM D2000 BG 810

* Alternative for higher power ratings

H cushion 92° shore A	Size -58 - 250	Nitrile Rubber	NBR	ASTM D2000 BG 910
-----------------------	----------------	----------------	-----	-------------------



* For temperature range of elastomers please see on page no. 37 - coupling selection



Riddhi Engineering Company

www.couplings-mounts.com
sales@riddhiengineeringco.com
+91 74900 32784