



EXPERTISE DRIVEN | CUSTOMER FOCUSED | SUSTAINABLE THINKERS

Data Sheets

Pin & Bush Couplings - EPB



Riddhi Engineering Company

www.couplings-mounts.com
sales@riddhiengineeringco.com
+91 74900 32784



PIN BUSH COUPLING

EPB Series



ESCO EPB Series coupling's assembly is made of two flanges interlocked with number of Pin & Bush flexible elements based on coupling size.

Conical rubber bush mounted on steel pins are unique flexible elements and take high shaft misalignments. Hubs are made of cast iron.

Pin bush couplings are suitable for general industrial application.

FEATURES

SIMPLICITY

EPB series couplings are easy to assemble and disassemble on machinery shafts. The couplings are also suitable for Independent running of the drive.

NO LUBRICATION.

EPB coupling do not require lubrication of any kind whatsoever.

SHOCK & VIBRATION ABSORPTION

EPB coupling has good shock absorption capacity due to construction being cushioned drive type transmitting the torque through rubber bushes.

SIZE AND COST

High torque capacity for compact size and low weight.

EASY MAINTENANCE.

No complicated mechanism to demand adjustment or maintenance. Inspection and replacement of bushes are easy and can be quickly fitted without dismantling or moving either of coupled shafts.

LOW OPERATIONAL COST.

In EPB Series coupling, wear part is the curved shaped bush, cost of bush coupling is reliable and economical in the long run.

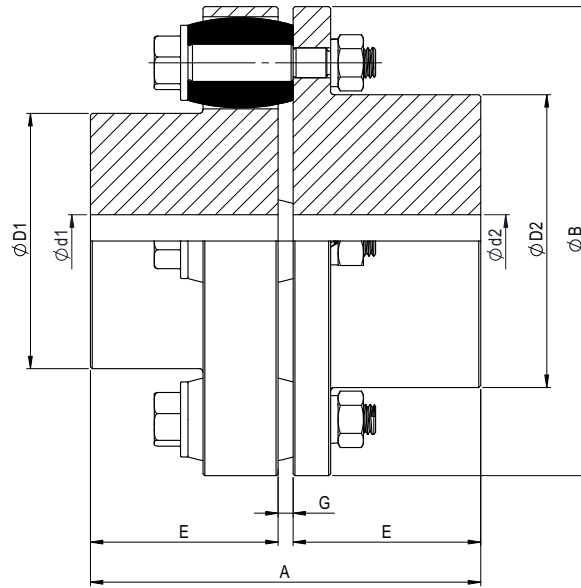
ESCO COUPLINGS & TRANSMISSIONS PVT. LTD.

69-D, Bengaluru Aerospace Park,
Unachuru Village, Jala Hobli
Bengaluru North, Yelahanka Taluk,
Bengaluru - 562149, INDIA



Riddhi Engineering Company

www.couplings-mounts.com
sales@riddhiengineeringco.com
+91 74900 32784



TECHNICAL DATA

Coupling Size	Torque, Nm	Max. speed rpm	Min. Bore	Max. Bore Ød1	Max. Bore Ød2	ØB	ØD1	ØD2	G	E	A	Wt. in kg	M.I (WR) in Kg m ²	Max. Misalignment		
														ΔKa	ΔKr	∠
EPB-105	95	7200	11	30	32	105	48	50	2-6	45	94	2.6	0.0027	2	0.3	1°
EPB-116	143	6100	12	39	42	116	60	68	2-6	45	94	3.6	0.0045	2	0.3	1°
EPB-125	162	5500	14	45	50	125	68	78	2-6	50	104	4.6	0.007	2	0.4	1°
EPB-144	315	4900	18	50	60	144	82	91	2-6	55	114	6.6	0.01	2	0.4	1°
EPB-162	525	4500	22	60	65	162	89	100	2-6	60	124	9.4	0.02	2	0.4	1°
EPB-178	640	3800	24	70	75	178	105	115	2-6	70	144	13.4	0.04	2	0.5	1°
EPB-198	1241	3400	28	80	90	198	124	135	2-6	80	164	19	0.06	2	0.5	1°
EPB-228	2005	3000	28	90	100	228	133	146	4-10	90	187	27.9	0.13	3	0.6	1°
EPB-252	3056	2700	38	105	115	252	156	167	4-10	100	207	38	0.21	3	0.6	1°
EPB-285	4584	2400	48	115	125	285	170	186	4-10	110	227	53	0.36	3	0.7	1°
EPB-320	6112	2100	55	125	135	320	196	212	4-10	125	257	74.8	0.65	3	0.7	1°
EPB-360	8881	1900	65	135	150	360	212	232	4-12	140	288	105.9	1.16	4	0.9	1°

NOTES :-

- ΔKa : Axial misalignment. ΔKr : Radial misalignment. ∠ : Angular misalignment.
- All dimensions are in mm.
- Weight and inertia are at minimum bore diameter.

Other coupling types available

Escogear CST / CST...M



Escogear FST



Escodisc DLC / DMU / DPU



Escogear NST



Escoflex A-R-S-T
Esconyl A-B-C



Escorail FTRN /FTRNO



Escospeed DHSU - GHS



Esco Couplings & Transmissions Pvt Ltd,

69-D, Bengaluru Aerospace Park, Unachuru Village, Jala Hobli Bengaluru North, Yelahanka Taluk, Bengaluru - 562149, INDIA