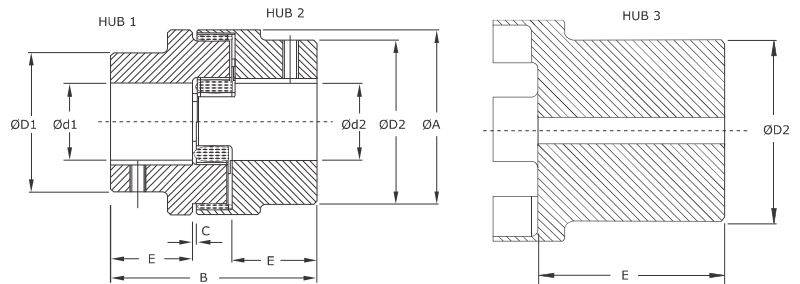




Riddhi Engineering Company

UTL UTEX COUPLINGS
(Curved Jaw with PU Spider)

UTL FLEXIBLE COUPLINGS



FEATURES

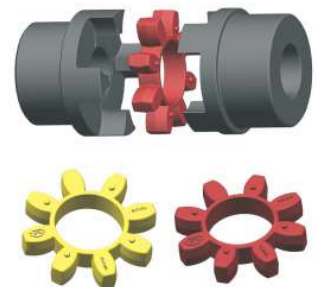
- Torsionally flexible, maintenance free
- Machined surfaces improve the dynamic properties
- Compact design

DIMENSIONS & TECHNICAL DATA

Size	Component	Rated Torque Nm		Dimensions are in mm								Wt. in. Kg in Pilot Bore	Moment of inertial (kg.m ²)	
		92° Shore A (Yellow Colour)	98° Shore A (Red Colour)	Max Speed rpm	Min. Bore	Max. Bore Ød1 Ød2	ØA	ØD1 ØD2	E	C	B			
14	Hub 2	7.5	12.5	19000	6	16	30	30	11	1.5	35	On request UTL will provide data. According to Hub combination.	On request UTL will provide data. According to Hub combination.	
19	Hub 1	10	17	14000	6	19	40	32	25	2	66			
	Hub 2					24		41						
24	Hub 1	35	60	10600	9	24	56	40	30	2	78			
	Hub 2					28		56						
28	Hub 1	95	160	8500	10	28	66	48	35	2.5	90			
	Hub 2					38		66						
38	Hub 1	190	325	7100	12	40	80	66	45	3	114			
	Hub 2					48		78			70			164
	Hub 3													
42	Hub 1	265	450	6000	14	45	95	75	50	3	126			
	Hub 2					55		94			75			176
	Hub 3													
48	Hub 1	310	525	5600	15	52	105	85	56	3.5	140			
	Hub 2					62		104			80			188
	Hub 3													
55	Hub 1	410	685	4750	20	60	120	98	65	4	160			
	Hub 2					74		118						
65	Hub 1	625	940	4250	22	70	135	115	75	4.5	185			
75	Hub 1	1280	1920	3520	30	80	160	135	85	5	210			
90	Hub 1	2400	3600	2800	40	97	200	160	100	5.5	245			

MATERIAL SPECIFICATIONS

Hub	Size - 14 - 90	Steel	St	S 355 J2G3 (St 52.3)
Hub	Size - 24 - 90	Cast Iron	CI	EN-GJL-250 (GG 25)
Hub	Size - 14 - 28	Aluminum	AL	BS 1490-LM 4
Spider 92° Shore A (Yellow Colour)	All Size	Polyurethane	PU	
Spider 98° Shore A (Red Colour)	All Size	Polyurethane	PU	



* For temperature range of elastomers please see on page no. 37 - coupling selection



Riddhi Engineering Company

www.couplings-mounts.com

sales@riddhiengineeringco.com

+91 74900 32784